



A new era

COVID -19 has brought about the rapid uptake of working from home as employees have embraced the flexibility it provides. Planning for Corporate Real Estate portfolios and requirements has to expand to consider “working from home” as an essential aspect of employee satisfaction measures and spatial functions within overarching office design strategies.

Activating a healthy work environment that enhances the wellbeing of employees in their home workspaces positively reinforces company culture. This brochure identifies different requirements and scales of intervention for fostering home productivity, from concept research and analysis to pragmatic and inspired design solutions.



Contents

01 / Insights

For some, working from home was a regular practice; for many, it's a new way of working brought about by the pandemic. By creating a healthy routine, an effective place to work, and the use of technology to get work done, it is possible to be more productive and feel good while doing it.

While every employee faces their own set of challenges, products that provide ergonomic support and maximise small areas create work from home spaces that bring comfort, enhance productivity and boost wellbeing.



02 / Personas

The Work From Home (WFH) environment has to encompass the aesthetics and functional needs of the individual. For example, an employee living in a family home together with their partner and children has different needs to an employee living in a single person flat in a metropolitan area. To understand these needs, our research and WFH packages focus on a variety of different life stages and user groups.



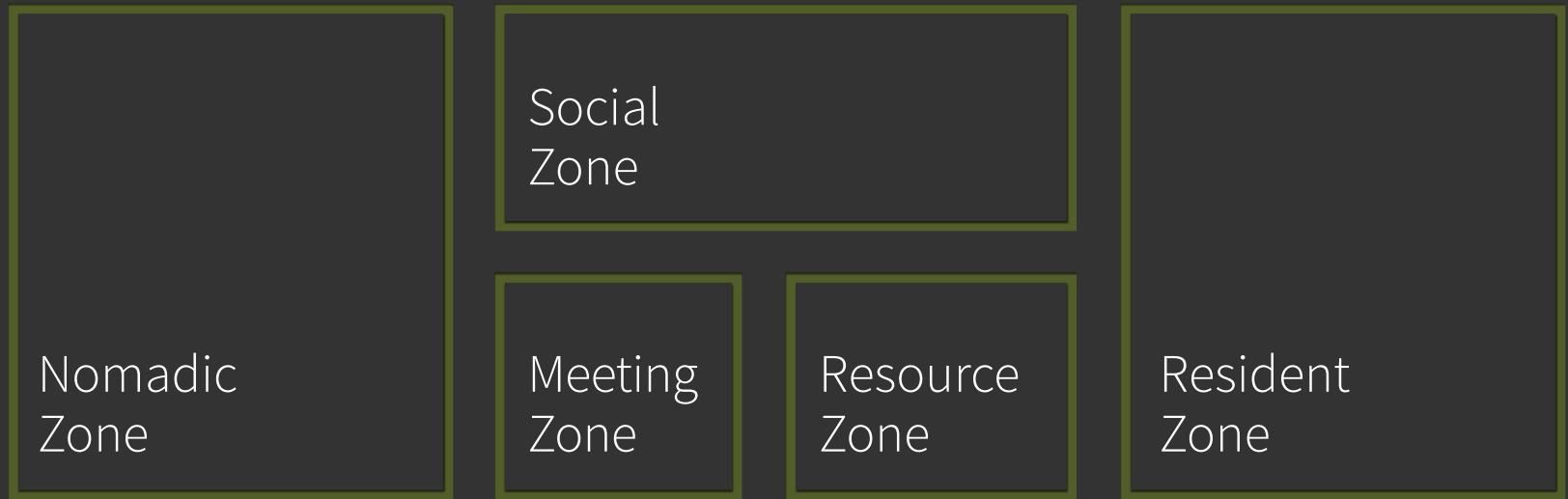
03 / Inspiration

We have developed five different inspirational themes to demonstrate how solutions could work in each context. Our themes of Urban, Green, Play, Soft and Smart are suitable for a broad range of users, from young professionals living alone or with their partners, to families and senior and executive level employees.



The new ecosystem of spaces.

The new ecosystem of spaces will include the home office. Even more so than now, the office will turn into a destination to foster community, identity and collaboration. Focused work will partially move to and most likely stay at the home office.



Why should corporates invest in **working from home** ?

WFH will stay, because...

- | COVID-19 has shown us that WFH is feasible and enhances business continuity planning
- | Efficiency and productivity increases are measurable
- | Employees expect flexibility
- | It is part of the new safety standards
- | Corporate agility can be increased

Let's make it add value...

- | Hiring and retaining top talent
- | Not limited by geography
- | Decentralization of locations
- | Save on travel costs, commute time
- | Limit absences
- | Better use of technologies

But be aware of challenges...

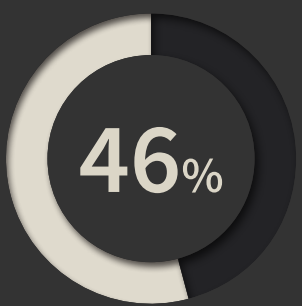
- | Reduced collaboration and creativity
- | Reduced sense of belonging and contribution
- | Performance management and trust
- | Learning and Development
- | Negative impacts on employees' wellbeing (stress, work/life balance, loneliness, lack of supervision)
- | Employee's individual environment parameters (distractions, family situation, connectivity and hardware, space available)

Most people are **uncomfortable at home.**



Comfortable workspaces.

Only 30% reported they would describe their workspace as comfortable. People with an ergonomic chair were more likely to report they have a comfortable workspace, yet only 24% of individual contributors reported having one.



Working at a desk.

40% of individuals work primarily or almost always at a desk. People who live in smaller homes are less likely to work at a desk.

*Source Steelcase

How does working from home fit into your workplace strategy?

Median days per week working from home
(Global Workplace Analytics, Global Work from Home Experience Survey, May 2020, JLL)



Main organizational needs



Collaboration

Collaboration is key to solving complex problems and driving innovation. Workplaces must be designed to support collaborative activities.



Wellbeing

The workplace can impact an employee's physical, cognitive and emotional wellbeing. The workplace needs to thoughtfully consider and address all three aspects of wellbeing to augment the performance of people, teams and organisations.



Engagement

Employee engagement is one of the most essential aspects of a successful organisation. A good work environment fosters engagement and positive behaviour among workers.



Culture + Identity

When working remotely, employees need to feel connected to the organisation they work for. Authenticity and the ability to identify with work has been proven to have a positive impact on the quality of work.



Ergonomics

Well-designed ergonomic furniture and tools help to sustain physical wellbeing at the workplace.



Tech

In order to work effectively, proper technology and tools are important to stay connected remotely.



Posture

Posture is important to sustain physical wellbeing in the workplace. Well-designed ergonomic furniture and tools are key.

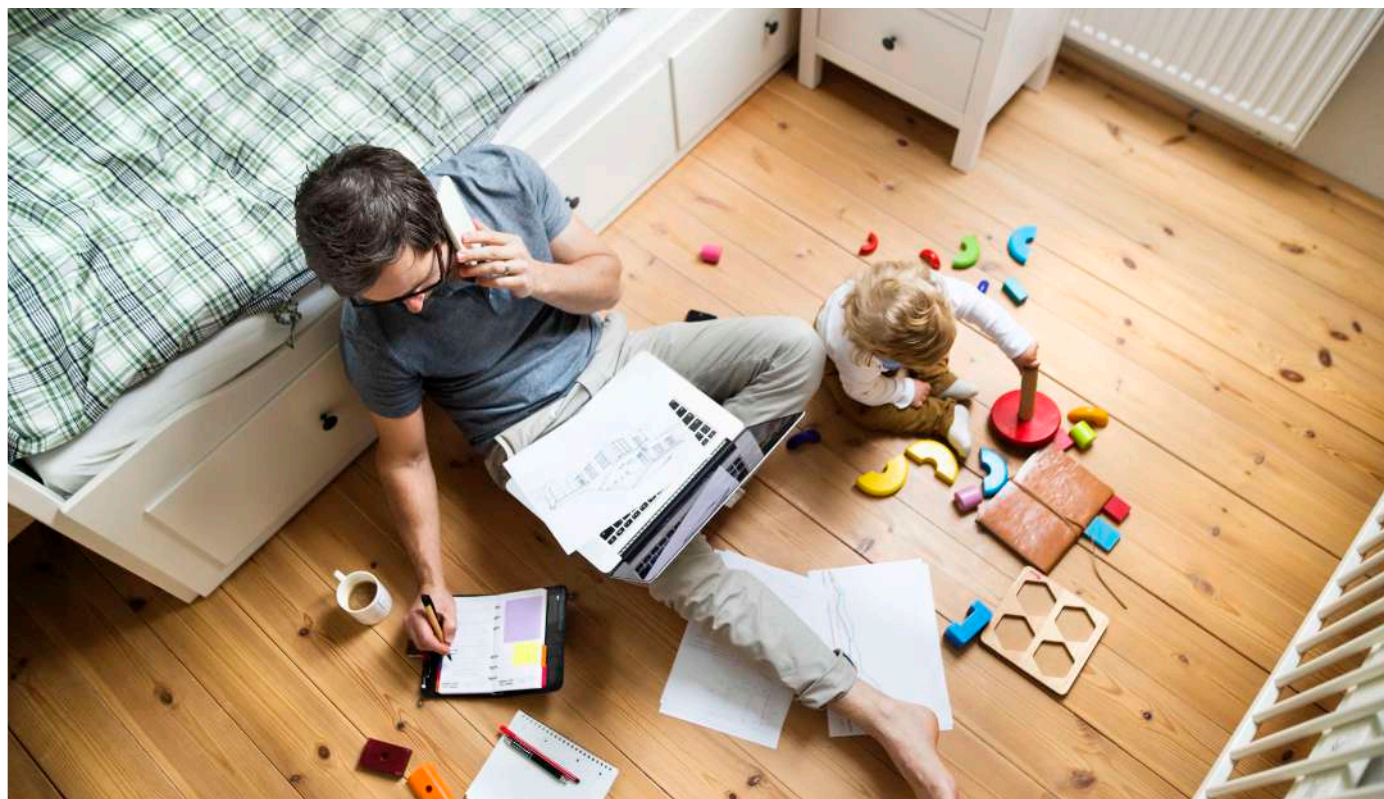


Storage

Proper storage solutions enable users to stow away work after use. This is essential in a well thought out WFH setting.

02 / PERSONAS

We are all unique.



Studio

The studio package targets a younger user group living in urban areas where space is a likely limitation. Designed to be integrated into a multifunctional living space, Studio can reflect different personalities and demonstrate a focus on authenticity and clear purpose.

Flex

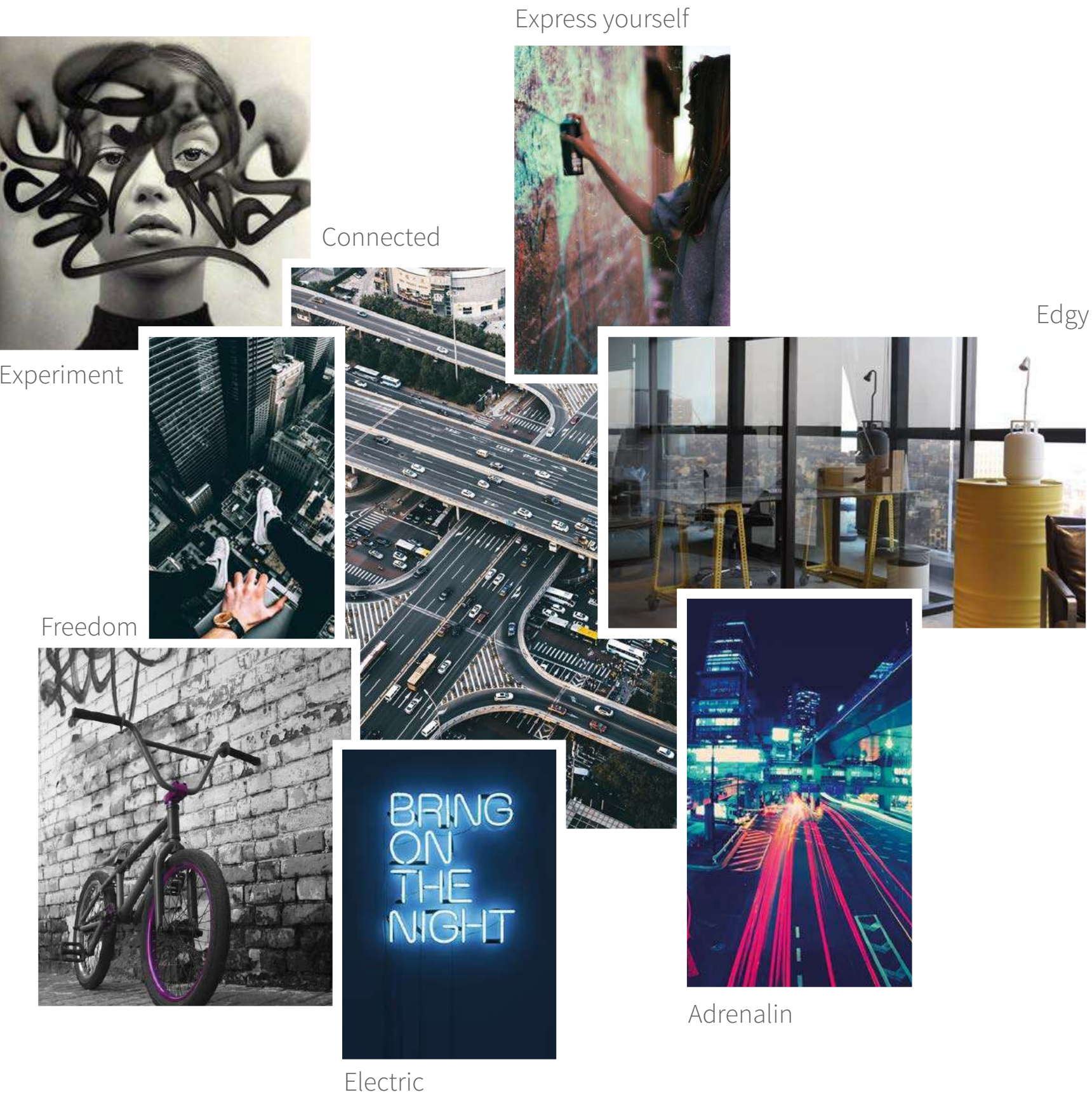
In flats and houses that do not allow for a separate workroom, work functionalities co-exist with other aspects of everyday life, especially in family homes. Flexibility and visual integration into the existing environment are critical.

Exec

At an executive level, desirability meets functionality, and a focus on ergonomics and premium materials is critical. These packages are more spacious and based on the assumption of a dedicated workspace within the home.

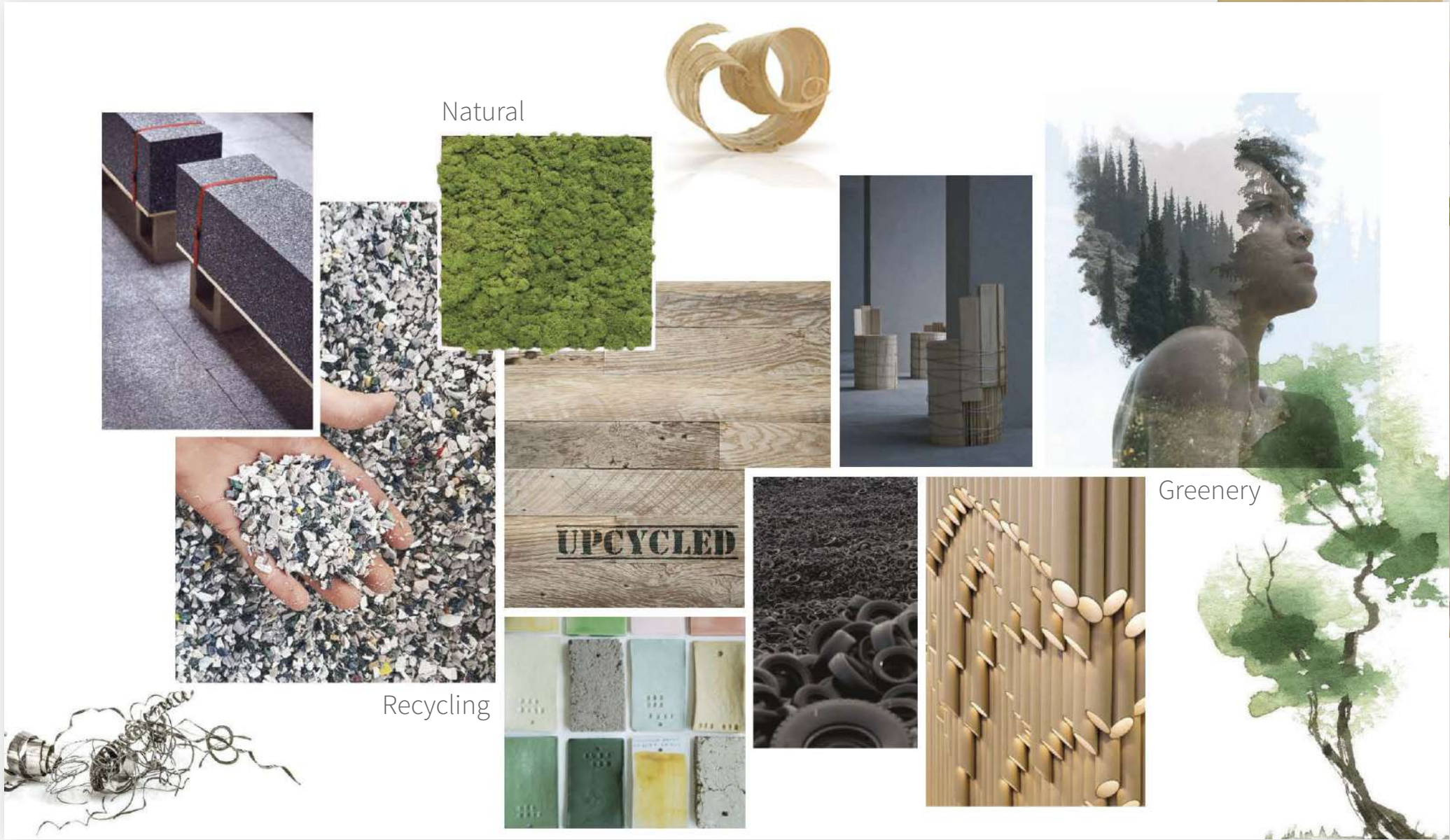
You only live once.

This package fits the spatial context and energy of living in the city.
Dynamic colours and high tech materials in ergonomic chairs and space-saving desk configurations resonate with the vibrancy of city life.



Greener. Better.

With a focus on sustainability and wellbeing, this setting offers any user the opportunity to create a corner office in their apartment. A height-adjustable desk, mobile energy source and adequate support for working while on a sofa encourage a dynamic environment where users can choose between a wide range of working positions. Easily movable panels help create a division that enables focusing in busy spaces or provides an extended work surface for pinning up notes and memos.



Greener. Better.

A minimal setting that discreetly creates a dedicated workspace in any room. The generous work surface and tech accessories offer ideal working conditions, while sustainably harvested timbers bring the warmth of nature into your home.



A stand-alone work pod that fits within a shared room in a home creates an enclosed private space. A comfy nook in felt and earthy colours helps users focus better on their work while the rest of the family can enjoy the rest of the room.

Life is so sweet.

Two people living together may find themselves in the situation where they both work from home, so this dual place workstation can easily be integrated into an existing room as a result of its wide and playful colour selection. As a joint workstation, it's role is to both bring users together during the day but also to allow them to have a personalised work experience through the choice of work surface and lighting options.



While integrating a small work corner in your apartment can be challenging, this comfy nook comes in a wide and playful selection of colours. Options make it easy to match your style, while the nook's design helps users focus on their work without creating any inconvenience for the rest of the family.

A cocoon in the air.

Due to a wide range of professions and roles, two people working in the same room might have totally different needs during the workday. This package taps into this need and offers two individual highly mobile tables and chairs, privacy screens of different sizes, mobile charging options and individual storage solutions so that users can redesign their home office with ease.



This package is aimed at users that have an extra free room at home. Whether its main use is as a visitor bedroom, a home office or a walk-in wardrobe, this space offers flexibility without compromising ergonomics. A generous work surface, an ergonomic chair and a nice laptop table for your sofa cater to different physical wellbeing needs.

Elegance is an attitude.

This package is aimed at users who have a dedicated room for working at home. The careful arrangement of elements and use of premium materials, highly ergonomic furniture and elegant accessories lead to a more executive feel for your home office.



Style



Details



Minimal



Efficient



Timeless



Elegant

 We are here for you.



We can help your company create positive workforce equity through providing ergonomic, space-efficient and inviting Work From Home solutions and furniture.

How can we help you design and deliver a Work From Home programme?

- | Audit and give advice on the implementation of a work from home strategy.
- | Provide a range of solutions packaged and priced with a variety of international suppliers.
- | Be a central resource for ordering and delivering different solutions determined by the needs of your staff and work culture.



Get in touch

Betty Surgis
Tétris Furniture Solutions
+33 (0) 678 23 17 03
bsurgis@tetris-db.com

Nuno Fernandes
Design Studio Director
+351 213 583 222
nfernandes@tetris-db.com

tétris × Steelcase

tetris-db.com

© 2021 Tétris. All rights reserved. The information contained in this document is proprietary to Tétris and shall be used solely for the purposes of evaluating this proposal. All such documentation and information remains the property of Tétris and shall be kept confidential. Reproduction of any part of this document is authorised only to the extent necessary for its evaluation. It is not to be shown to any third party without the prior written authorisation of Tétris. All information contained herein is from sources deemed reliable; however, no representation or warranty is made as to the accuracy thereof.